

DEMOCRACY AND BOUNDARY COMMISSION CYMRU ETC. ACT 2013

The Gwynedd (Communities) Order 2026

Made - - - - [24/06/2026]

Coming into force in accordance with article 1(2)

Gwynedd Council (“the Council”) has, in accordance with section 25 of the Democracy and Boundary Commission Cymru etc. Act 2013 (“the 2013 Act”), submitted to the Democracy and Boundary Commission Cymru (“the Commission”) a report dated April 2026 on its review of, and recommendations for changes to, community arrangements in the County of Gwynedd.

The Commission has agreed to give effect to the Council’s recommendations without modifications.

More than six weeks have elapsed since the Council’s recommendations were submitted to the Commission.

The Commission makes the following Order in exercise of the power conferred on it by section 38(1) of the 2013 Act.

Title and commencement

1.–(1) The title of this Order is the Gwynedd (Communities) Order 2026.

(2) This Order comes into force at the next local government election.

Interpretation

2. In this Order–

“Map A” means the map deposited by the Commission with Gwynedd Council and reproduced for reference in Schedule 1 to this Order;

“Map B” means the map deposited by the Commission with Gwynedd Council and reproduced for reference in Schedule 2 to this Order;

“Map C” means the map deposited by the Commission with Gwynedd Council and reproduced for reference in Schedule 3 to this Order;

where a boundary is shown on a map as running along a road, railway line, footway, watercourse or similar geographical feature, it is to be treated as running along the centre line of the feature;

words and expressions used in this Order have the same meaning as they have in Part 3 of the Democracy and Boundary Commission Cymru etc. Act 2013, except so far as a contrary intention appears.

Local government area changes

3. Changes are made in the local government area of the County of Gwynedd in accordance with the following provisions of this Order.

Community of Bethesda – change to community ward areas

4. The part of the community ward of Uchaf of the Community of Llanllechid shown shaded in green on Map A:

(a) is transferred to the community ward of Rachub of the Community of Bethesda.

Community of Llanegryn – change to community ward areas

5. The part of the community ward of Morfa of the Community of Tywyn shown shaded in purple on Map B:

(a) is transferred to the community of Llanegryn.

6. The part of the Community of Bryn-crug shown shaded in pink on Map B:

(a) is transferred to the community of Llanegryn.

Community of Y Felinheli – change to community ward areas

7. The part of the community ward of Vaynol of the Community of Pentir shown shaded in blue on Map C:

(a) is transferred to the community of Y Felinheli.

Sealed with the seal of the Democracy and Boundary Commission Cymru on the **24** day of **June 2026**

[24/06/2026]



A handwritten signature in black ink that reads 'K Jones'.

Karen Jones

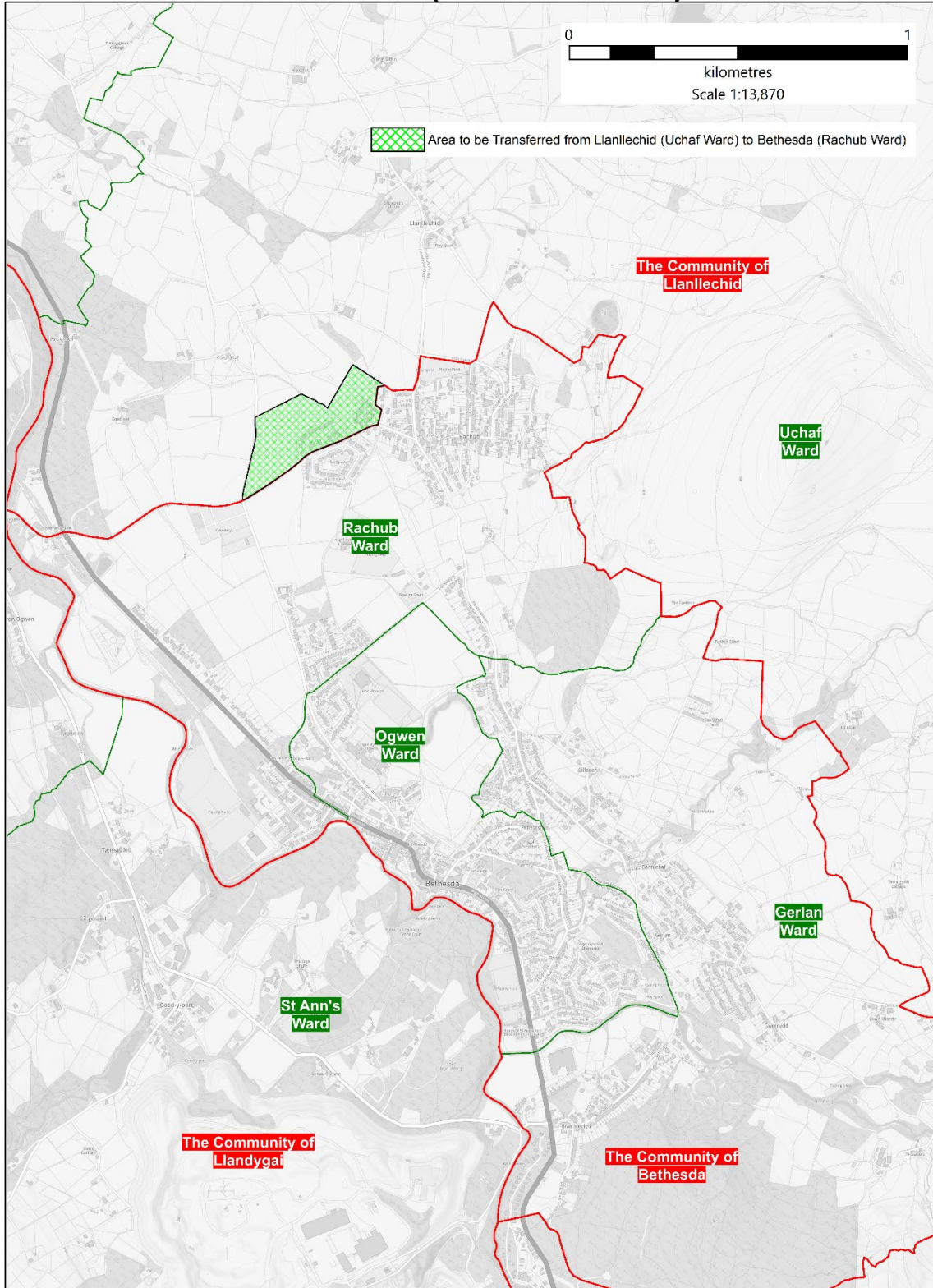
Chair

Democracy and Boundary Commission Cymru

SCHEDULE 1

MAP A – CHANGES TO COMMUNITY WARD AREAS – COMMUNITY WARDS OF UCHAF (LLANLLECHID) AND RACHUB (BETHESDA)

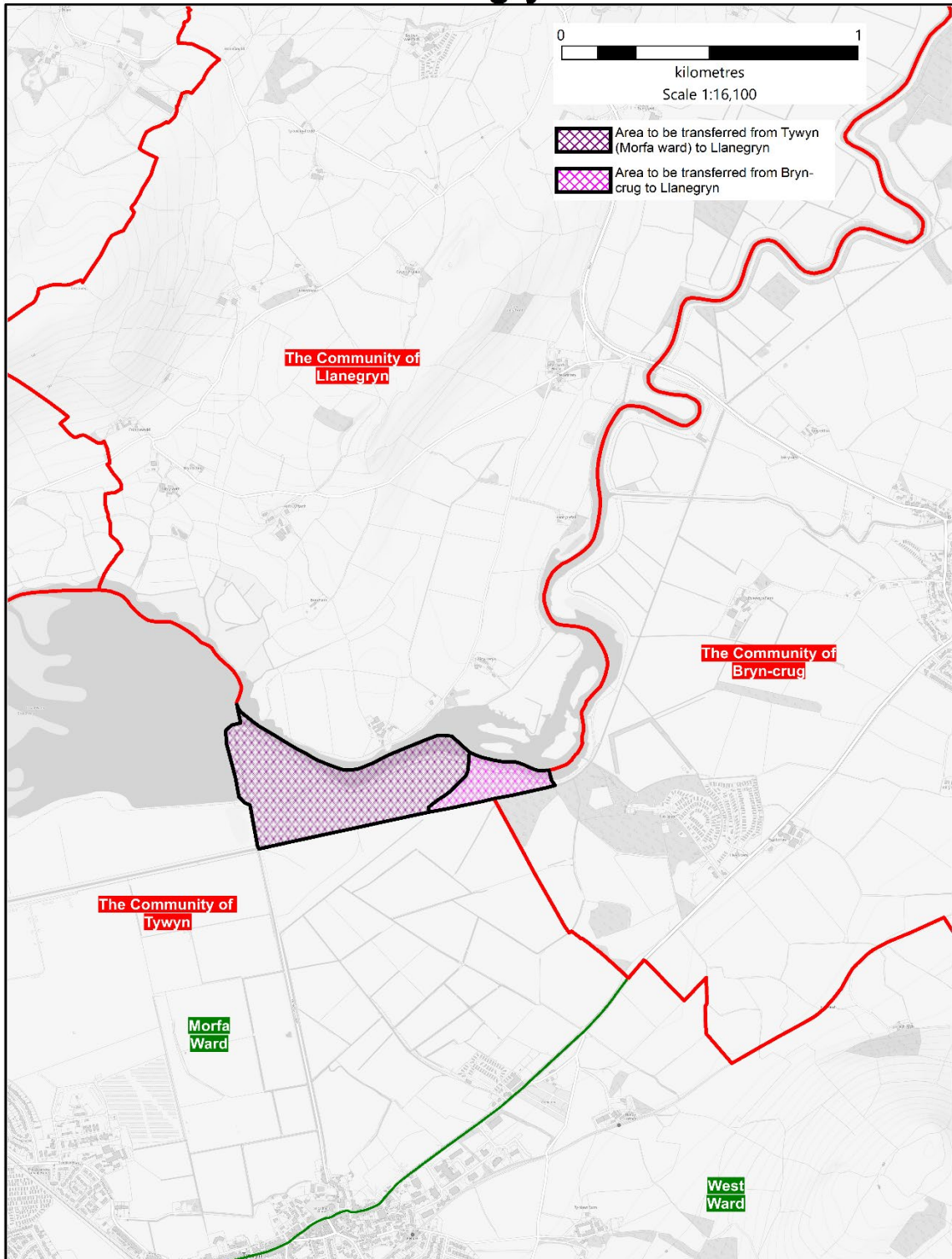
Bethesda (Rachub Ward)



SCHEDULE 2

MAP B – CHANGES TO COMMUNITY WARD AREAS – COMMUNITY WARDS OF MORFA (TYWYN) AND THE COMMUNITIES OF BRYN-CRUG AND LLANEGRYN

Llanegryn

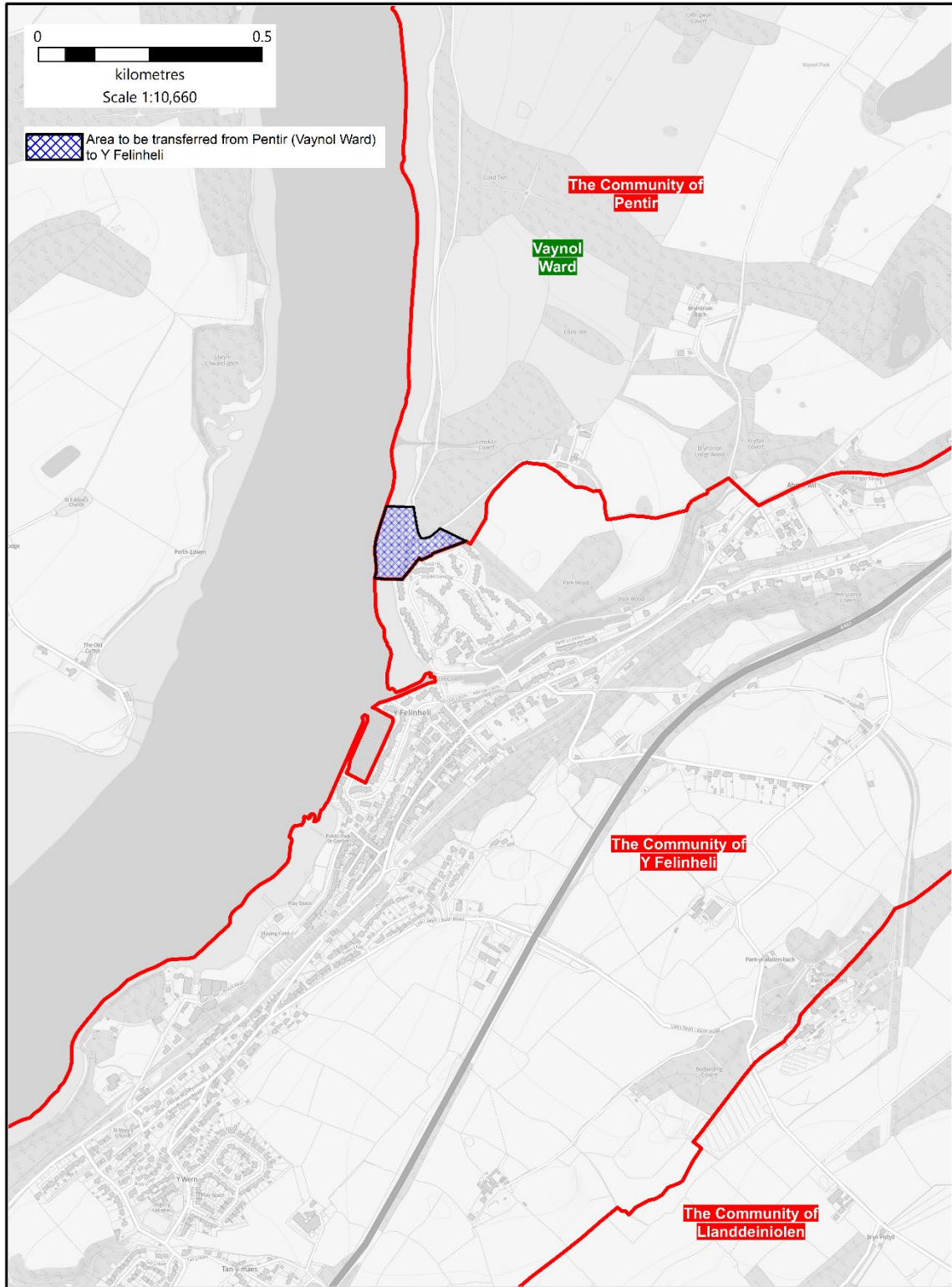


© Crown copyright and database rights [2026] OS [100047875]

SCHEDULE 3

MAP C – CHANGES TO COMMUNITY WARD AREAS – COMMUNITY WARDS OF VAYNOL (PENTIR) AND Y FELINHELI

Y Felinheli



© Crown copyright and database rights [2026] OS [100047875]

EXPLANATORY NOTE

(This note is not part of the Order)

This Order, made in accordance with section 38(1) of the Democracy and Boundary Commission Cymru etc. Act 2013 (“the 2013 Act”), gives effect to recommendations made by Gwynedd Council (“the Council”). The Council reported in April 2026 on its review under section 25 of the 2013 Act of community boundaries.

The report recommended changes to the boundaries of the community wards of Rachub of the Community of Bethesda, Uchaf of the Community of Llanllechid, Morfa of the Community of Tywyn, Vaynol of the Community of Pentir, and the Communities of Bryn-crug, Llanegryn, and Y Felinheli. This order makes changes to the boundaries of those communities, and community wards.

Prints of the boundary maps A to C to which this Order relates are deposited and may be inspected during normal office hours at the offices of Gwynedd Council [**and at the offices of the Welsh Government at Cathays Park, Cardiff, CF10 3NQ (Local Government Democracy Division)**]